

RESUFLOOR™ DECO FLAKE II

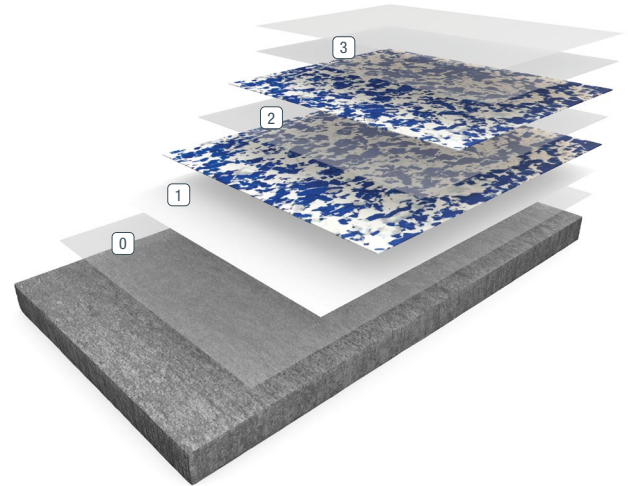
Resufloor DecoFlake II is a seamless, decorative flooring system consisting of 100% solids epoxy body coats with decorative Macro or Micro vinyl chip broadcasts, finished with a durable urethane topcoat ensuring excellent wear and chemical resistance.

BENEFITS

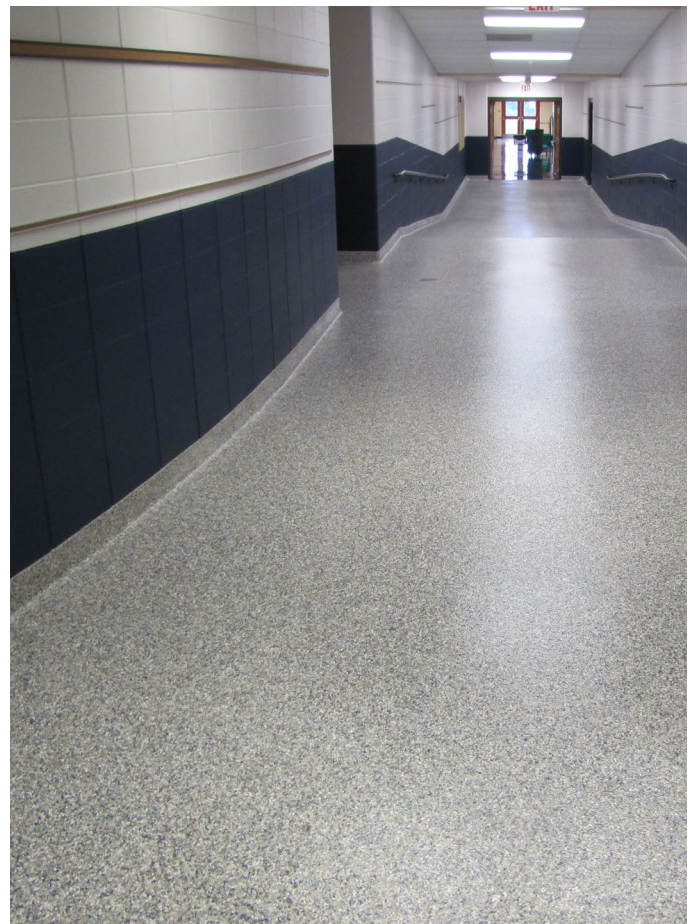
- Long lasting — Seamless flooring systems for years of service with minimal maintenance
- Wear/chemical resistant — High-quality urethane topcoat for superior wear and chemical resistance
- Decorative — Multiple blends of Macro or Micro vinyl chip blends for a unique look
- Non-slip — Textured finishes aid in a safer floor, even when wet

USES

- Hospitals
- Cleanrooms
- Laboratories
- Pharmaceutical
- Lobbies
- Restrooms
- Locker rooms
- Retail
- Schools
- Supermarkets
- Cafeterias
- Dining areas
- Veterinary exam rooms



- 0 Primer
- 1 Base Coat/Broadcast
- 2 Second Broadcast
- 3 Grout/Seal Coat



FEATURED COLORS



Flaxseed



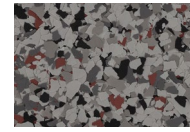
Ocelot



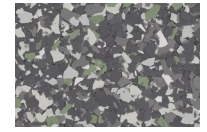
Almond Milk



Agave



Kingsnake



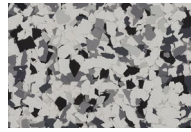
Korat



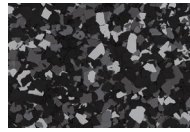
Chinchilla



Limestone



Greyhound



Black Bean



Speckled Ash



Moon

Unlimited standard and custom blends available. Please see Deco Flake Color Cards for the extensive collection of standard blends or use our Flooring Visualizer Tool to create your own custom blend at floorvisualizer.sherwin-williams.com. This reproduction approximates the actual color. Factors such as the type of product, degree of gloss, texture, size and shape of the area, lighting, heat or method of application may cause color variance. Contact your Sherwin-Williams representative for details.

ABOUT CHEMICAL RESISTANCE

Sherwin-Williams High Performance Flooring offers a broad range of systems to accommodate nearly every industrial, commercial and institutional setting. Each flooring system includes a standard chemical-resistant topcoat or surface proven to perform under typical conditions.

Important considerations:

- The combination of cleaning solutions, sanitizing chemicals, processing substances and products found in any operational setting is unique.
- Knowing exactly which materials are present — as well as their concentrations and typical exposure times before cleanup — is critical for proper flooring system selection.
- During the specification process, a flooring system’s standard chemical-resistant topcoat may get replaced with one better suited to unique facility conditions.

The ability of a flooring system to perform as designed relies heavily on proper selection. Matching each use case with the right chemical-resistant flooring is key to having a facility looking great and functioning at peak level over the long term.

See our Chemical Resistance Guide and other technical resources on our website. Connect with a Sherwin-Williams High Performance Flooring expert for help with specifying an optimal flooring system for your facility.

TYPICAL PHYSICAL PROPERTIES

Hardness, Shore D, ASTM D-2240	75-80
Water Absorption, ASTM D-570	0.04%
Flammability, ASTM D-635	Self-extinguishing
Flame Spread/NFPA-101, ASTM E-84	Class A
Tensile Strength, ASTM D-638	3,700 psi
Flexural Strength, ASTM D-790	4,700 psi
Compressive Strength, ASTM D-695	16,000 psi
Compressive Strength, ASTM C-579	10,500 psi
Izod Impact (ft. lb./in. notch), ASTM D-256	0.50
Bond Strength to Concrete, ASTM D-4541	400 psi substrate fails
Elevated Temperature, MIL D-3134	No slip or flow
Thermal Shock, 50 cycles of immersion in chilled & boiling water, MIL F-52505	No cracking or loss of adhesion
UV Resistance, MIL F-52505	No chalking or loss of adhesion
Abrasion Resistance, CS-17 Wheel, Wgt. Loss, 100gm. Load, 1000 cycles, ASTM D-4060	4 mg loss with (Armor Top Gloss with grit)
Static Coefficient of Friction*, ANSI B101.1	> 0.6
Dynamic Coefficient of Friction - Wet*, ANSI A326.3	> 0.42
VOC Content	0 g/L

*Sherwin-Williams High Performance Flooring systems can be built to meet or exceed the requirements of Static or Dynamic Coefficient of Friction testing per installation. Contact your Sherwin-Williams territory sales manager or tech representative for more information on alternative textures, grit/grip additives, or smooth coatings for your specific environment. A sample should always be obtained and tested prior to purchase for any non-slip flooring system.

THE SHERWIN-WILLIAMS DIFFERENCE

Sherwin-Williams High Performance Flooring delivers world-class industry subject matter expertise, unparalleled technical and specification service, and unmatched regional commercial team support to our customers around the globe.

United States & Canada

sherwin-williams.com/resin-flooring
swflooding@sherwin.com