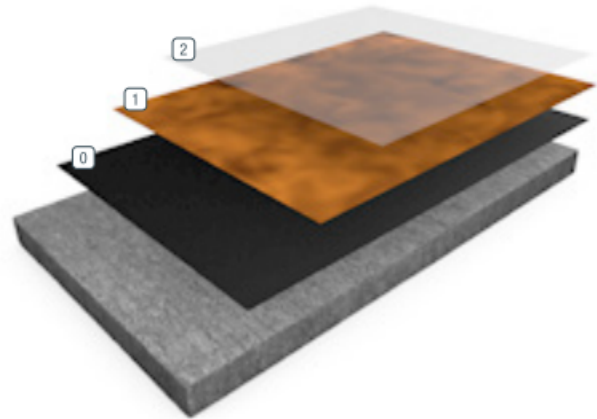


## RESUFLOOR™ TOPCOAT METALLIC II

Sherwin-Williams Resufloor Topcoat Metallic II is a decorative flooring system with an exciting, unique look. The high-solids epoxy is applied as a primer at 3-5 mils and then at 15 mil as a pigmented basecoat. This is followed by application of a semi-transparent coat comprised of a UV-resistant epoxy and special “metallic” pigments. As the metallic coat cures, the pearlescent pigments disperse into beautiful, one-of-a-kind patterns across the floor. Finally, a topcoat of a UV light-stable satin urethane is applied for added durability. Gloss options are also available.



0 Pigmented Primer and Basecoat (Two Coats)

1 Metallic Coat

2 Topcoat

### BENEFITS

- Acceptable for use in USDA inspected facilities
- Seamless, easy to clean and maintain
- Durable, wear- and slip-resistant
- Chemical- and stain-resistant
- Customizable color
- Natural stone appearance
- Cost effective versus carpet or tile
- Conveniently field-blended
- LEED® Points IEQ Credit 4.2, meets SCAQMD
- LEED® v4 compliant

### USES

- Hotels and lobbies
- Schools and offices
- Healthcare facilities and labs
- Restrooms and locker rooms
- Arenas and sports complexes
- Supermarkets and retail stores



FEATURED COLORS



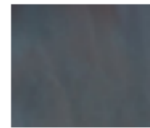
Angel Wing



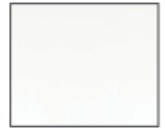
Blue Hawaiian



Blue Topaz



Girls Night Out



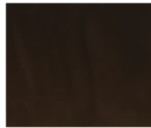
Icing



Kiwi Tart



Sugared Rum



Metallic Lava Cake



Mimosa



Old Fashioned

Please see the Resuflo Topcoat Metallic Color Card for details or envision a color in your space using our Flooring Visualizer Tool at [floorvisualizer.sherwin-williams.com](http://floorvisualizer.sherwin-williams.com). This reproduction approximates the actual color. Factors such as the type of product, degree of gloss, texture, size and shape of area, lighting, heat or method of application may cause color variance. Contact your Sherwin-Williams Representative for details.

ABOUT CHEMICAL RESISTANCE

Sherwin-Williams High Performance Flooring offers a broad range of systems to accommodate nearly every industrial, commercial and institutional setting. Each flooring system includes a standard chemical-resistant topcoat or surface proven to perform under typical conditions.

Important considerations:

- The combination of cleaning solutions, sanitizing chemicals, processing substances and products found in any operational setting is unique.
- Knowing exactly which materials are present – as well as their concentrations and typical exposure times before cleanup – is critical for proper flooring system selection.
- During the specification process, a flooring system’s standard chemical-resistant topcoat may get replaced with one better suited to unique facility conditions.

The ability of a flooring system to perform as designed relies heavily on proper selection. Matching each use case with the right chemical-resistant flooring is key to a having a facility looking great and functioning at peak level over the long term.

See our Chemical Resistance Guide and other technical resources on our website. Connect with a Sherwin-Williams High Performance Flooring expert for help with specifying an optimal flooring system for your facility.

TYPICAL PHYSICAL PROPERTIES

<p><b>Abrasion Resistance</b> ASTM D 4060 Taber Abraser, CS-17 Wheel 1,000 gram load, 1,000 revolutions</p>	<p>5.1 mg/loss Result based on independent lab testing of Resutile HTS</p>
<p><b>Adhesion to Concrete</b> ASTM D 4541</p>	<p>450 psi (concrete failed)</p>
<p><b>Adhesion to Concrete</b> ASTM D 7234</p>	<p>732 psi (concrete failed)</p>
<p><b>Flammability</b> ASTM D 635</p>	<p>182 mm/min</p>
<p><b>Shore Hardness</b> ASTM D 2240</p>	<p>80-85 @ 1 sec   75-80 @ 15 sec</p>
<p><b>Tensile Strength</b> (epoxy resin) ASTM D 2370</p>	<p>8,000 psi</p>

THE SHERWIN-WILLIAMS DIFFERENCE

Sherwin-Williams High Performance Flooring delivers world-class industry subject matter expertise, unparalleled technical and specification service, and unmatched regional commercial team support to our customers around the globe.

United States & Canada

[sherwin-williams.com/resin-flooring](http://sherwin-williams.com/resin-flooring)  
[swflooring@sherwin.com](mailto:swflooring@sherwin.com)