

RESUFLOOR™ AQUA MCS

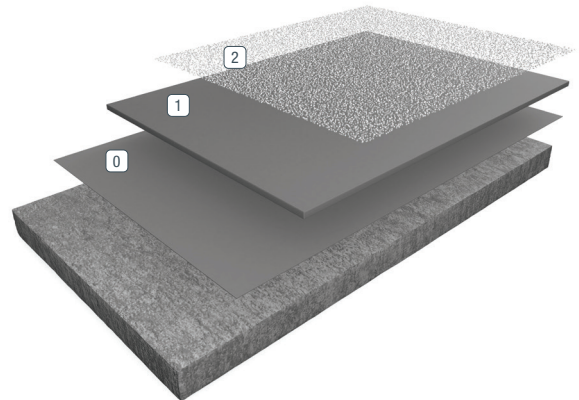
Sherwin-Williams Resufloor Aqua MCS is a self-leveling system for concrete that helps control moisture vapor emissions. Resufloor Aqua MCS can be applied with a notched trowel or squeegee. It's designed to provide a refinished surface on concrete prior to the application of a nonpermeable flooring finish.

BENEFITS

- No testing for moisture necessary
- Used under all floor finishes
- Water based
- Excellent compressive strength
- Moisture insensitive
- Withstands vapor emissions

USES

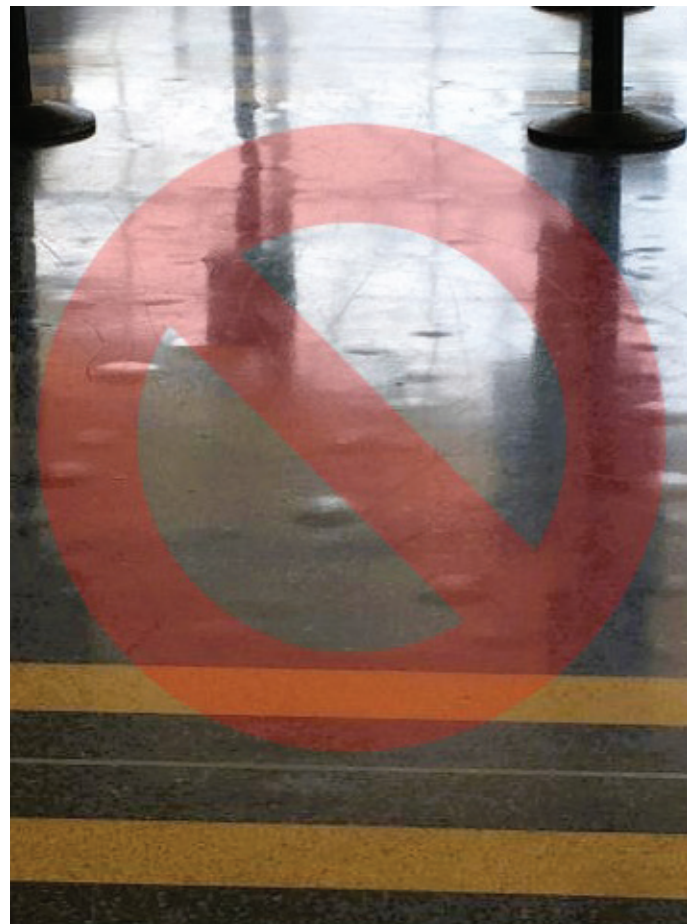
- Moisture vapor remediation
- Underlayment for impermeable flooring systems
- Repairs and levels deteriorated concrete



0 Primer

2 Broadcast

1 Body Coat



ABOUT CHEMICAL RESISTANCE

Sherwin-Williams High Performance Flooring offers a broad range of systems to accommodate nearly every industrial, commercial and institutional setting. Each flooring system includes a standard chemical-resistant topcoat or surface proven to perform under typical conditions.

Important considerations:

- The combination of cleaning solutions, sanitizing chemicals, processing substances and products found in any operational setting is unique.
- Knowing exactly which materials are present — as well as their concentrations and typical exposure times before cleanup — is critical for proper flooring system selection.
- During the specification process, a flooring system’s standard chemical-resistant topcoat may get replaced with one better suited to unique facility conditions.

The ability of a flooring system to perform as designed relies heavily on proper selection. Matching each use case with the right chemical-resistant flooring is key to having a facility looking great and functioning at peak level over the long term.

See our Chemical Resistance Guide and other technical resources on our website. Connect with a Sherwin-Williams High Performance Flooring expert for help with specifying an optimal flooring system for your facility.

TYPICAL PHYSICAL PROPERTIES

Cure Time, Recoat	18 hours
Hardness, Shore D, ASTM D 2240	75
Tensile Strength, ASTM C 307	500-550 psi
Compressive Strength, ASTM C 579	5,800 psi
Flexural Strength, ASTM C 580	1,200 psi
Adhesion, ACI 503R	300 psi concrete failure

THE SHERWIN-WILLIAMS DIFFERENCE

Sherwin-Williams High Performance Flooring delivers world-class industry subject matter expertise, unparalleled technical and specification service, and unmatched regional commercial team support to our customers around the globe.

United States & Canada

sherwin-williams.com/resin-flooring
swflooring@sherwin.com